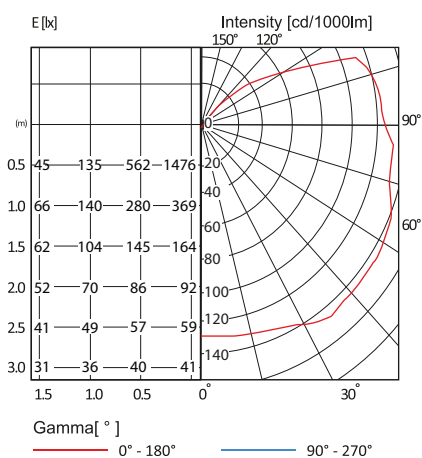


Features & Benefits

PWGN Liftwell series is a vandalism proof luminaire with the specially fabricated metal sheet lamp cover to prevent against pilferage or any vandalism acts. The metal guard for the lamp cover is hinged on one side of the casing for easy maintenance. Cover plate held securely by treaded nut, offering large screw area using hand for fast installtion.

Photometric



Options

- Electronic Ballast

Application

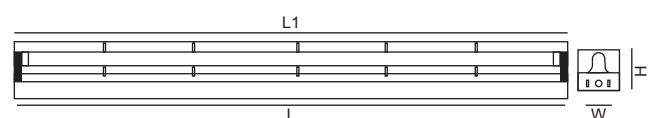
Where prevention of any vandalism in acts is required.

Electrical

Control Gear	Philips/Osram/Tridonic
Light Source	Fluorescent T8 lamp of 18W/36W/58W
Wattage	39W
Lumen Output	2399lm
CRI	80
LER	62
CCT	4000K/6500K

Mechanical

Construction	Made of cold rolled sheet
Guard	Wire Net



Ordering Data

MODEL NO.	NO. OF LAMP	L(mm)	L1(mm)	W(MM)	W1(MM)	H(MM)	H1(MM)
PWGN 136 Liftwell	1x36W	1220	-	70	-	111	-